

## FEATURES

- Explosion proof Junction Box Enclosure for the wiring of ASCO solenoids
- Intended for use in potentially explosive atmospheres, according to Directive Chinese Standard - GB
- NEPSI certificate (GYJ11.1695X) in compliance with GB3836.1, GB3836.2, GB3836.9
- Electrostatic epoxy powder paint, stainless steel screws, and molded epoxy coils provide excellent protection in corrosive environment
- Factory pre-wired and assembled to any explosion proof ASCO RedHat II solenoid valve
- Easy electrical installation and installation cost reduction by means of a separate explosion proof splice box to terminate solenoid valves' wiring
- Enclosure comes with 12 combination choices of 4 different conduit directions and 3 sizes of conduit entries



## CONSTRUCTION

<b>Housing &amp; Cover</b>	Epoxy painted die cast aluminium
<b>Gasket</b>	Silicon (VMQ)
<b>Coil</b>	Epoxy molded
<b>Ground Screws</b>	Stainless Steel
<b>Terminal Block</b>	Ceramic

## ELECTRICAL CHARACTERISTICS SAFETY CODE

**Standard Voltages** Ex d mb IIC T6..T3 Gb (gas)

AC: 24, 120, 240, 480 volts, 60 Hz  
or (110, 220 volts, 50 Hz)

DC: 6, 12, 24, 120, 240 volts

(Valves with VCEF housing maintain wattage and current ratings as shown on individual catalog sheets.)

## TEMPERATURE CLASSIFICATION TABLES

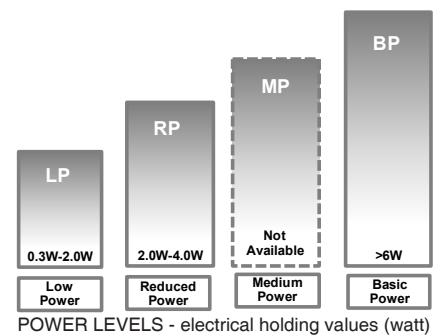
The minimum allowable ambient temperature is -40°C for the operator.  
Select the requested "T" classification from the temperature classification tables (AC or DC), respecting the maximum ambient temperature and cold (20°C) electrical holding power values.

AC (-) Solenoids

power level (watt)	solenoid size			insulation class	"T" classification	maximum ambient temp. (°C)
	M6	MXX	M12			
<b>Reduced Power (RP)</b>						
3.5		•		F	T4	60
<b>Basic Power (BP)</b>						
6.1	•			F	T4	52
6.1	•			H	T4	60
8.1	•			F	T4	52
8.1	•			H	T4	60
9.1	•			F	T3	52
9.1	•			H	T3	60
10.1		•		F	T4	52
10.1		•		H	T4	60
11.1	•			F	T3	52
11.1	•			H	T3	60
12.0 <sup>(2)</sup>		•		F	T3	60
15.1		•		F	T3	55
16.1		•		F	T4	52
16.1		•		H	T3	60
17.1		•		F	T3	40
17.1		•		H	T3	40
20.1		•		F	T3	22
20.1		•		H	T3	22

DC (=) Solenoids

power level (watt)	solenoid size		insulation class	"T" classification	maximum ambient temp. (°C)
	M6	MXX			
<b>Low Power (LP)</b>					
0.55		•	F	T6	65
0.70		•	H	T5	80
0.75		•	F	T6	65
1.40		•	F	T6	60
1.70		•	F	T6	60
1.80		•	F	T5	74
2.00		•	F	T5	74
<b>Basic Power (BP)</b>					
10.60	•		F	T4	55
10.60	•		H	T4	55
11.60		•	F	T4	55
11.60		•	H	T4	55
12.60		•	F	T4	35
18.60	•		F	T4	30
18.60	•		H	T4	30
20.60	•		H	T4	30
22.60		•	F	T4	35
22.60		•	H	T4	35
24.60		•	H	T4	35



<sup>(1)</sup> Make sure that the selected ambient temperature does not exceed the allowable valve temperature characteristics as specified on the appropriate valve catalog sheets

<sup>(2)</sup> AC (-) rectified coil construction

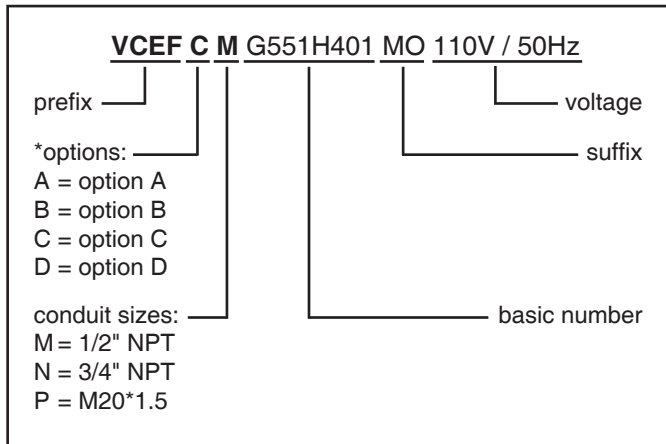
### PREFIX TABLE

prefix							description
1	2	3	4	5	6	7	
V	C	E	F	H	T	X	Flameproof/Encapsulated - Aluminium NEPSI (GB3836) <sup>(3)</sup> Class H - High temperature Other special constructions

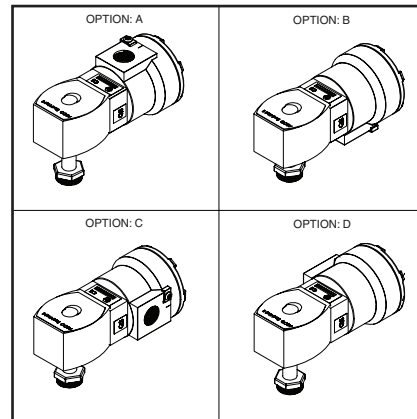
<sup>(3)</sup> Prefix VCEF - It comes with 12 combination choices of 4 different conduit directions and 3 conduit entries sizes.  
Refer to details under ORDERING EXAMPLES VALVES

### ORDERING EXAMPLES VALVES:

Add prefix corresponding to specific conduit size required to any RedHat II valve catalog number & specify the voltage.



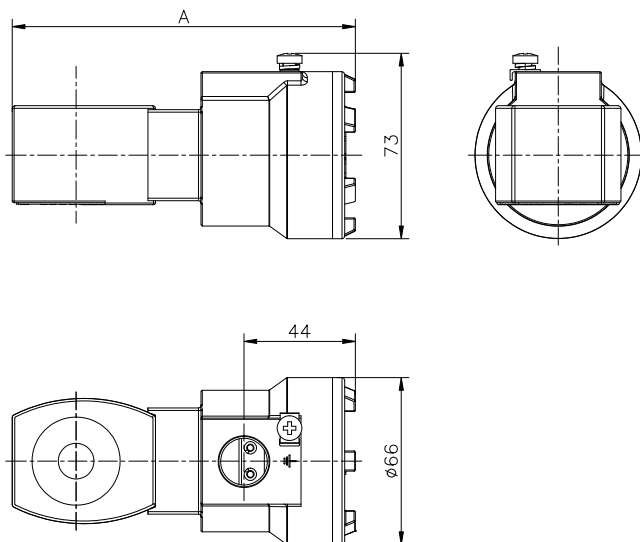
\*options



### INSTALLATION

- Installation/Maintenance instructions are included with each valve
- The solenoid operators can be mounted in any position without affecting operation
- For optimum life and performance, the solenoid should be mounted vertically and upright to reduce the possibility of foreign matter accumulating in the solenoid base sub-assembly area
- Internal and external earthing connection

### DIMENSIONS(mm), WEIGHT(kg)



SOLENOID SIZE	A(mm)	*WEIGHT
M6	129	0.75kg
MXX	136	0.75kg
M12	136	0.75kg

\*weight excludes solenoid